

Wilkins Park: Proclaimed as a public recreation ground in 1893, it is named after Mine Operations Manager Bert Wilkins. It is believed that this is the area that the bullock 'Captain' used to graze after straying from Foxlow Station, 12 km from the village, reputedly giving the village its name.

Miners Memorial: Dedicated to the miners and their families on 1 October 2000. Cobar Mines purchased the jenny wheel from Lake George Mines in 1962. Residents of Captains Flat, the Flaherty family, located the wheel and transported it back to the village when Cobar Mines closed. It now forms part of the memorial.

Post Office: A fine example of architecture of the time, the front of the building has been altered only slightly. The postal service was established 16 April 1883.

Police Station: Built in 1896, it was originally the Court House. Take note of the air vents, which include the crest of Queen Victoria's crown.

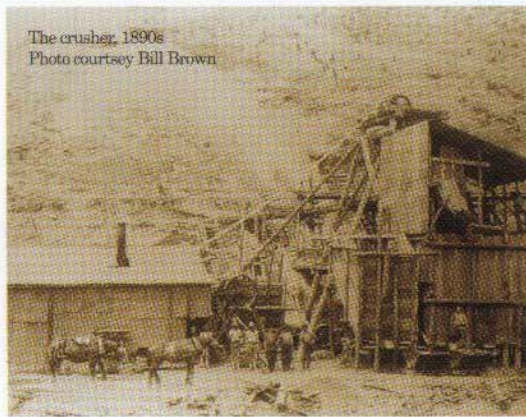
St Brigid's Catholic Convent School: Mother Mary McKillop was interested in establishing the Order of St Joseph sisters in the village. She came via Bungendore to visit the chapel and proposed convent on 14 April 1899 and again on 27 July 1901.

Bushrangers: The Clarke brothers were very active in the region. One of several hideouts they had in the area is in the mountains between Captains Flat and Parkers Gap, where the bushrangers had a view of Foxlow Plains and the roads leading to the goldfields in Braidwood, Araluen and Majors Creek. The brothers twice held up Foxlow Station.

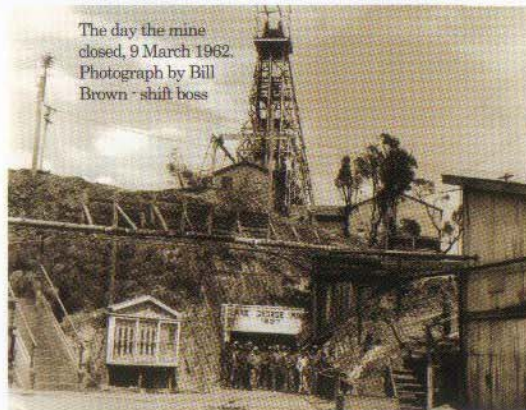
Follow Braidwood Road to

The Water Wheel: A camping area in Lowden Park, east of the village. The historic water wheel once drove a generator to provide lighting for a logging camp.

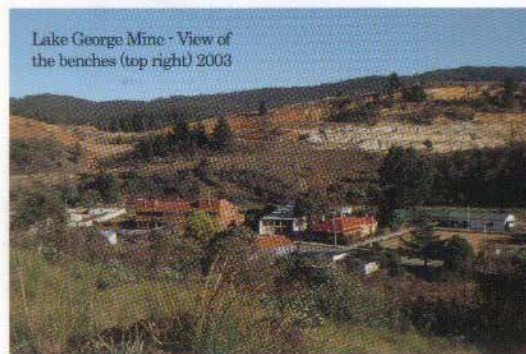
Deua National Park: The entrance to the park is 17km south of the village. The Walking Trail takes you to the Big Hole and across the Shoalhaven River and to the Marble Arch. The Big Hole is a limestone collapse nearly 100 metres deep and 50 metres wide.



The crusher, 1890s
Photo courtesy Bill Brown



The day the mine closed, 9 March 1962.
Photograph by Bill Brown - shift boss



Lake George Mine - View of the benches (top right) 2003

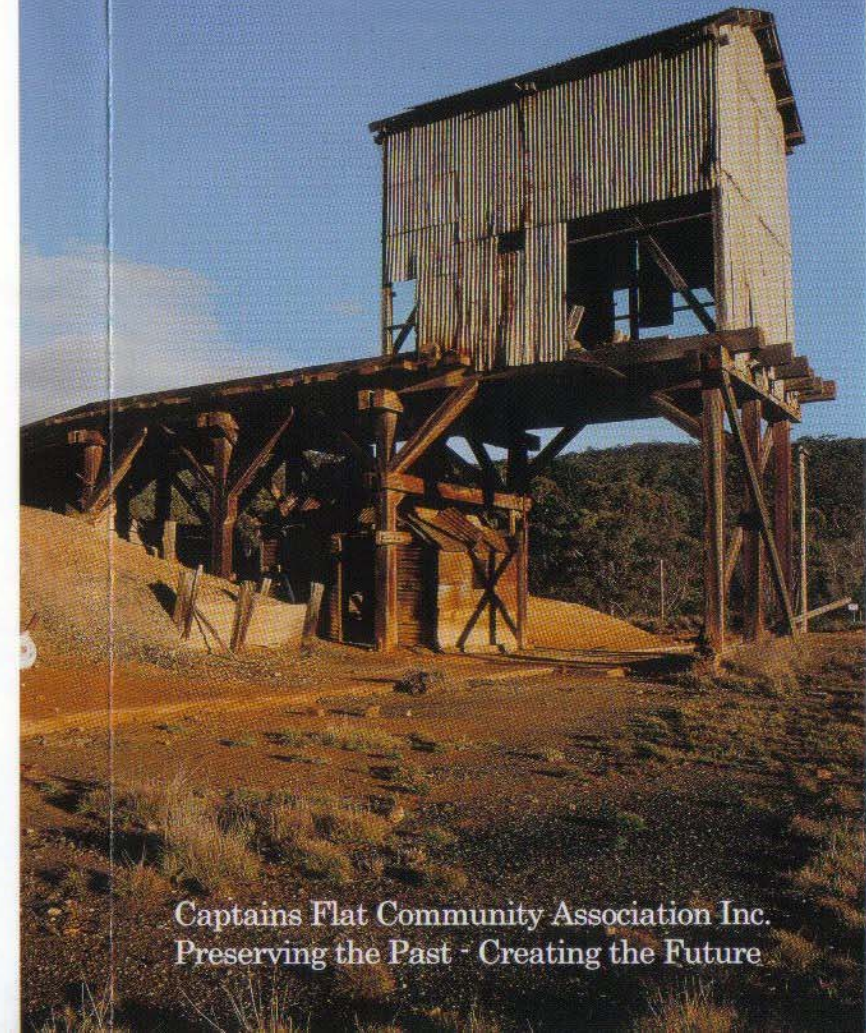
Colour photography by Derek Ross
Cover photograph - The Weighbridge

Funded by the Commonwealth Regional Assistance Programme and supported by the Capital Region Employment Council



Captains Flat

Heritage Trail of a Mining Town Pathway to Gold



Captains Flat Community Association Inc.
Preserving the Past - Creating the Future